



NYSE MKT: LODE

Comstock Mining Inc. is a Nevada-based, gold and silver mining company with extensive, contiguous property in the Comstock District and is an emerging leader in sustainable, responsible mining, including concurrent and accelerated reclamations, asset protection and historical restorations. The near term goal of our business plan is to deliver stockholder value by validating qualified resources and reserves (proven and probable) from our first two resource areas, Dayton and Lucerne, and significantly grow the commercial development of our operations through extended, long-lived mine plans that are economically feasible and socially responsible.

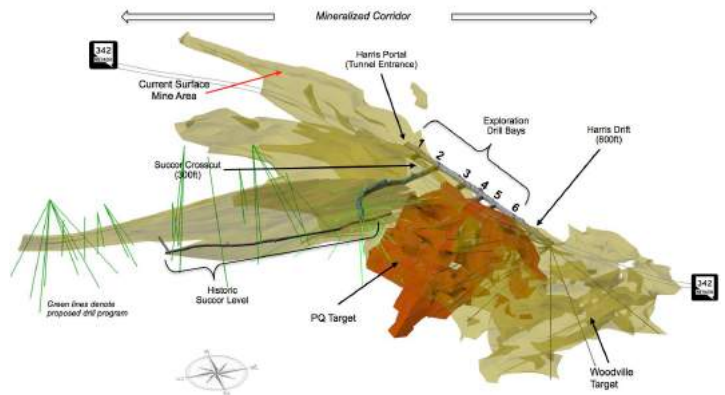


Second largest land position in Storey County Nevada

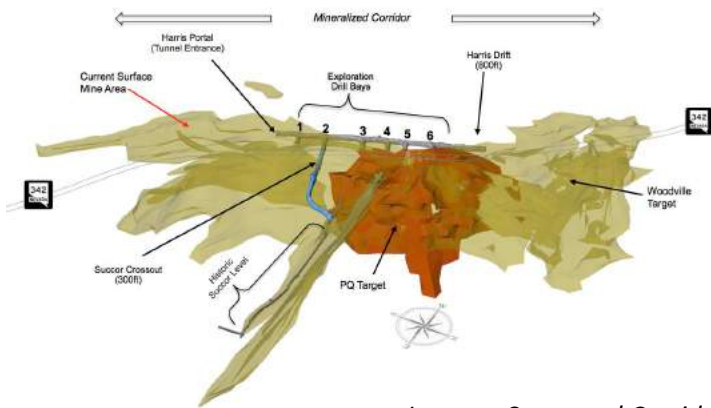
- 2345 Private acres
- 6000 Public acres

MODERN MINING AND EXPLORATION OPERATIONS IN A WORLD-CLASS HISTORIC DISTRICT

- Permitted infrastructure for mining and exploration
- Merrill Crowe Heap Leach System
- Known High Grade Targets



Drift Extension Accessing Succor Target



Lucerne Structural Corridor

Lucerne Resource Area, Nevada, USA

- 1.59 million ounces Gold (M&I only)
- 15.33 million ounces Silver (M&I only)
- Open on the east and north and at depth

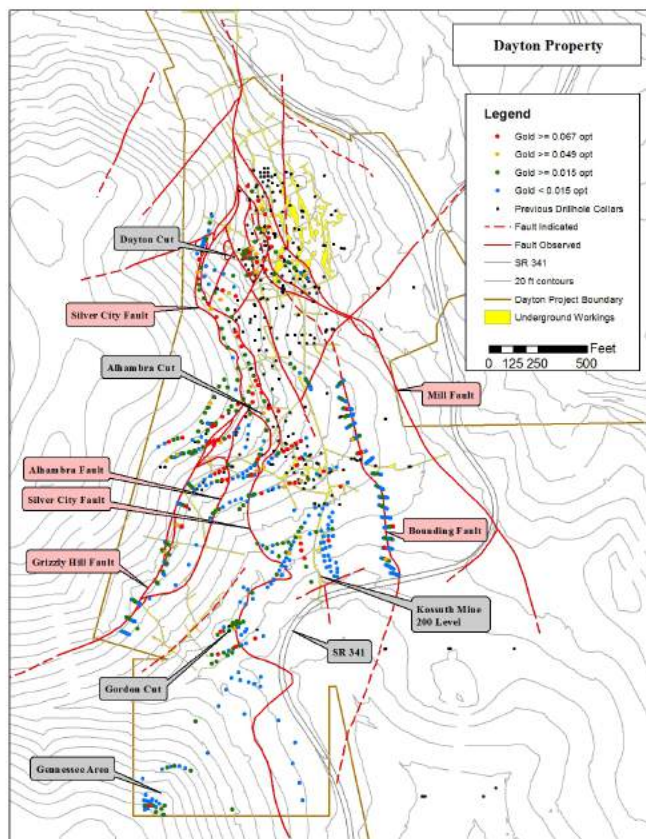
"The author believes the Comstock Mine Project represents a well-explored, epithermal, precious metal deposit within a world-class mining district... The geology of the project area is well described and understood through vigorous surface mapping and drill hole logging. The density of geologic data is high, and the reliability is excellent, particularly in the various Lucerne Mine areas." - Behre Dolbear



Core Samples – Lucerne Underground Drill Program

Dayton Resource Area, Nevada, USA
(0.5 million total gold equivalent ounces)

- **0.24 million ounces Gold (M&I only)**
- **1.77 million ounces Silver (M&I only)**
- *Open on the west, south, and northern borders and at depth*



Comstock Mining Inc. NYSE MKT: **LODE**

Share Price (12/31/2016) \$ 0.26
 52-week Range \$0.19 - \$0.62
 Market Cap \$ 49.1M
 Common Shares Outstanding 188.7M

Top Institutional & Insider Holders

(as of December 31, 2016)

- Winfield Group
- Van Den Berg Management, Inc.
- Sun Valley Gold LLC
- U.S. Global Investors, Inc.
- Royce & Associates LLC
- GF Capital LLC
- Gabelli Funds LLC

EXPERIENCED MANAGEMENT

Corrado De Gasperis

Exec Chairman, President & CEO

Judd B. Merrill

Chief Financial Officer

Laurence G. Martin

Director of Exploration

Timothy J. George

Senior Mine Engineer

David Reyes

Director of Metallurgy and Processing

Scott H. Jolcover

Director of Business Development

Larry Gorell

Director of Environmental & Permitting

BOARD OF DIRECTORS

Corrado De Gasperis

Executive Chairman

J. Clark Gillam

Daniel W. Kappes

William J. Nance

Robert A. Reseigh

Contact Information

Corrado De Gasperis

Exec Chairman, President & CEO

degasperis@comstockmining.com

Judd Merrill

Chief Financial Officer

merrill@comstockmining.com

Neither this informational material nor any related calls or discussions constitutes an offer to sell or the solicitation of an offer to buy any securities.